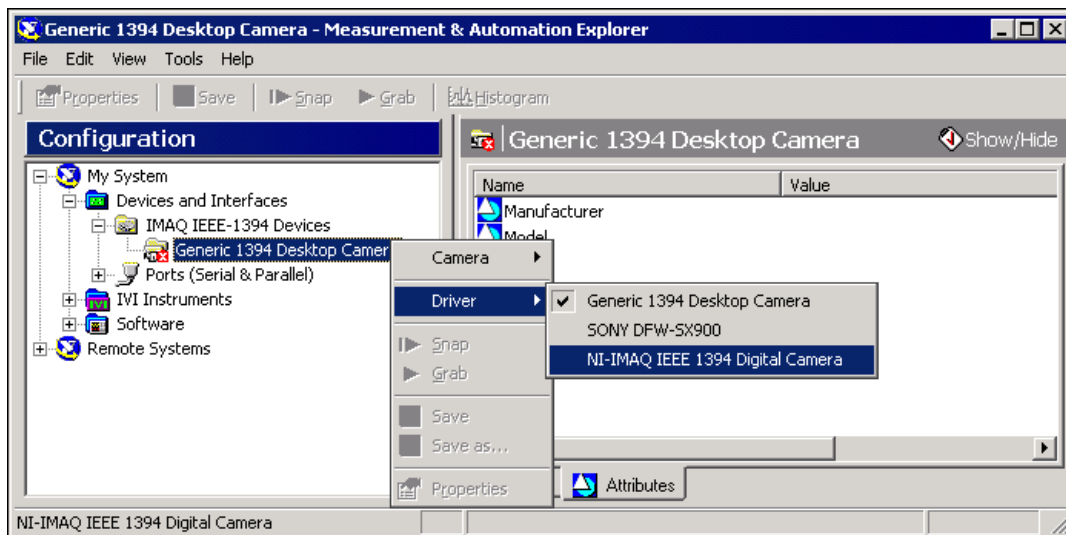


GETTING STARTED WITH NI-IMAQ™ FOR IEEE 1394 CAMERAS

Version 1.1

Perform the following instructions to get started using NI-IMAQ for IEEE 1394 Cameras:

1. Disconnect all IEEE 1394 cameras.
2. Install the NI-IMAQ for IEEE 1394 Cameras software.
3. Connect your camera.
4. Run Measurement & Automation Explorer.
 - a. Double-click the Measurement & Automation (MAX) icon on your desktop. You can use MAX to modify camera properties. Once you have saved these properties, they become your default settings for all NI-IMAQ for IEEE 1394 Cameras or IMAQ Vision applications.
 - b. Click the plus sign next to Devices and Interfaces to display a list of your installed IEEE 1394 IMAQ devices.



IMAQ™, National Instruments™, NI™, ni.com™, and NI-IMAQ™ are trademarks of National Instruments Corporation. Product and company names mentioned herein are trademarks or trade names of their respective companies. For patents covering National Instruments products, refer to the appropriate location: **Help»Patents** in your software, the `patents.txt` file on your CD, or `ni.com/patents`.

July 2002
322885B-01

- c. If your camera does not show up as a NI-IMAQ IEEE 1394 digital camera, switch the driver by right-clicking the camera and selecting **Driver>NI-IMAQ IEEE 1394 Digital Camera**.
- d. Click the **Properties** button on the toolbar to view or modify the camera file.



5. Acquire an image.

- a. Select the camera and click the **Properties** button on the toolbar to view or modify the camera features.
- b. Click the **Snap** button on the toolbar to acquire your first image. Select the **IMAQ** tab to view your image.
- c. Click the **Grab** button on the toolbar to acquire images continuously. This allows you to focus your camera. Select the **IMAQ** tab to view your images.

